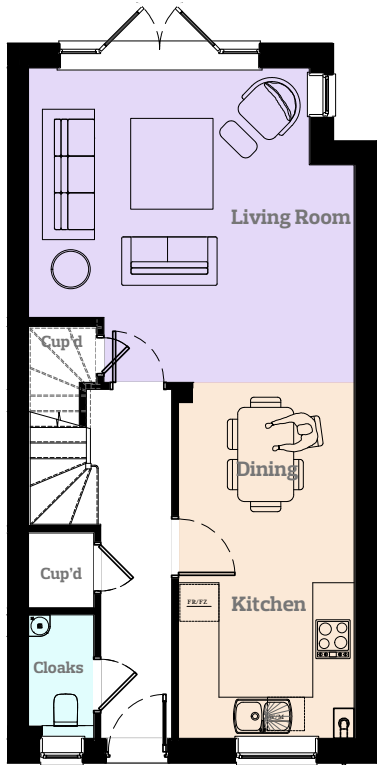


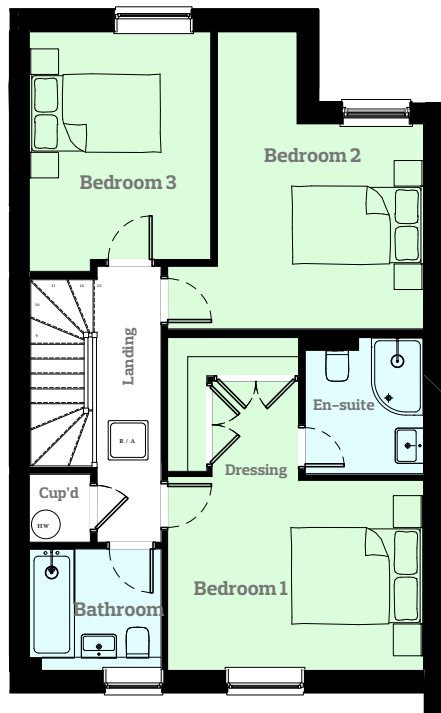
TOTAL AREA

106.1 Sqm 1142 Sqft



GROUND FLOOR

Living	4843 x 4680mm 15.9 x 15.4ft
Kitchen/ Dining	2611 x 5298mm 8.6 x 17.4ft
WC	969 x 1837mm 3.2 x 6ft



FIRST FLOOR

Bed 1/ Dressing	4007 x 5199mm 13.1 x 17ft
Bed 1 En-Suite	1853 x 2132mm 6 x 7ft
Bed 2	4007 x 4644mm 13.1 x 15.2ft
Bed 3	2842 x 3745mm 9.3 x 12.3ft
Bathroom	2064 x 1887mm 8.7 x 6.3ft

KEY

 R/A Roof Access Panel

 Boiler