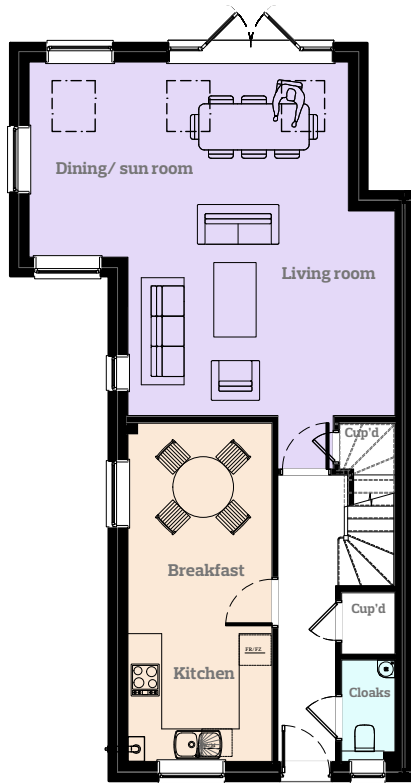


TOTAL AREA

113.7 Sqm 1224 Sqft

1

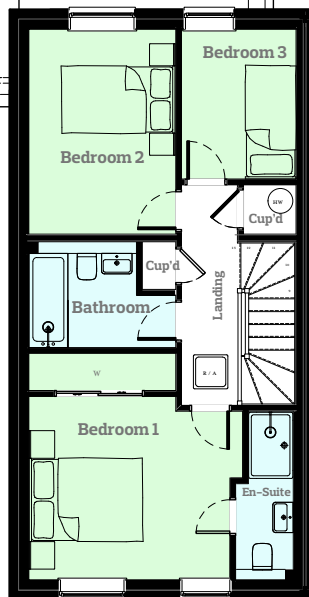
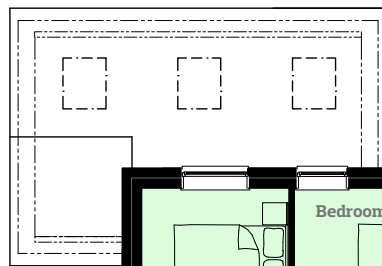


GROUND FLOOR

Living/Family/
Dining 6412 x 6633mm
21 x 21.8ft

Kitchen/
Breakfast 2611 x 6129mm
8.6 x 20.1ft

WC 969 x 1837mm
3.2 x 6ft



FIRST FLOOR

Bed 1 3866 x 4105mm
12.7 x 13.5ft

Bed 1 1045 x 3057mm
En-Suite 3.4 x 10ft

Bed 2 2662 x 3713mm
8.7 x 12.2ft

Bed 3 2077 x 2714mm
6.8 x 8.9ft

Bathroom 2662 x 1919mm
8.7 x 6.3ft

KEY

 R/A Roof Access Panel

 Boiler