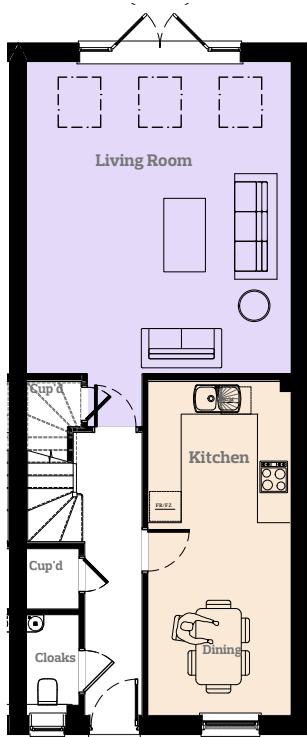


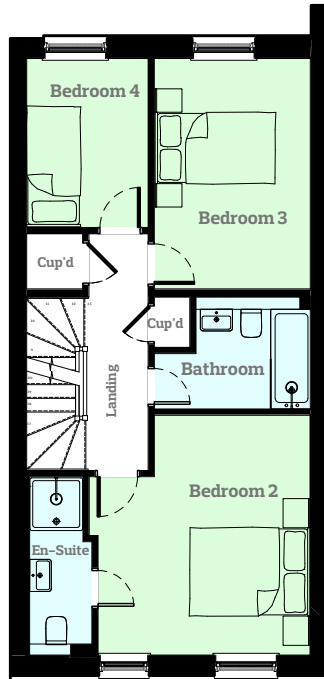
**TOTAL AREA**

148.5 Sqm 1599 Sqft



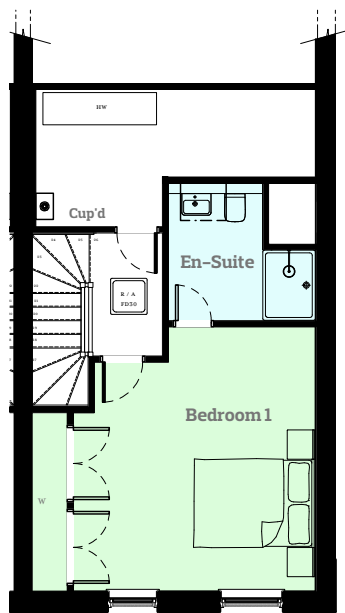
**GROUND FLOOR**

Living	4844 x 5721mm 15.9 x 18.7ft
Kitchen/ Dining	2612 x 6125mm 8.6 x 20ft
WC	969 x 1837mm 3.2 x 6ft



**FIRST FLOOR**


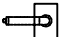
Bed 2	3775 x 4100mm 12.4 x 13.5ft
Bed 2 En-Suite	1065 x 3052mm 3.5 x 10ft
Bed 3	2669 x 3940mm 8.8 x 12.9ft
Bed 4	2077 x 2891mm 6.8 x 9.4ft
Bathroom	2669 x 1919mm 8.8 x 6.3ft



**SECOND FLOOR**

Bed 1	4844 x 4521mm 15.9 x 14.8ft
Bed 1 En-Suite	2512 x 2352mm 8.2 x 7.7ft

**KEY**

-  Roof Access Panel
-  Boiler